

# MIPOT 2.4 GHz MODEM

Product Code: **32001445 -PRELIMINARY-**



**PRODUCT SUMMARY:**

The 32001445 is a **2.4 GHz transceiver** that implements a physical layer of the IEEE 802.15.4 standard, optimized for **ultra-low consumption** applications, suitable for **low power networks**. Its spread spectrum modulation assures great immunity to interferers.

This module works as a **RF modem**, allowing the implementation of **point-to-point communication** or more complex **custom networks** (provided that the network protocol is managed from an external host).

**Small LCC form factor** (15.5 x 26 mm only) and ultra-low current consumption makes this module ideal for highly integrated low power (battery operated) solutions for Internet of Things (IoT) applications, security systems, alarms, sensor networks, metering, smart buildings, supply chain.

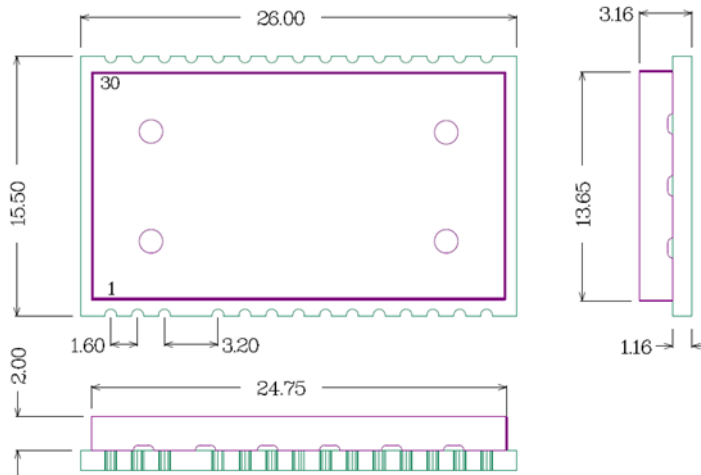
All messages can be cyphered with **AES128 encryption** algorithm ensuring confidential authentication and integrity during the exchange of data payload.

The module meets all the requirements in the **industrial temperature range -40 / 85 °C** and is compliant with **REACH, RoHS and 2014/53/EU Radio Equipment (RED)** directives.



RF WIRELESS

## 1. MECHANICAL CHARACTERISTICS



ALL DIMENSIONS ARE IN MILLIMETERS  
GENERAL TOLERANCE +/-0.1MM

## 2. ABS. MAX. RATINGS

Transceiver Power Supply +Vcc (pin 15)	0 ÷ 3.7 V
Max. Voltage allowed on input pins	Vcc + 0.3 V
Storage Temperature (excl. package)	-40 ÷ 85 °C
Storage Temperature (incl. package)	-10 ÷ 65 °C
Operating Temperature	-40 ÷ 85 °C
Radio Frequency Input, pin 2:	10 dBm

**MIPOT S.P.A.**

Via Corona, n. 5  
(Zona Ind.)  
34071 Cormons (GO)  
Italy  
Tel. +39 0481 630200 ra.  
Fax +39 0481 62387  
mipot@mipot.com

## 3. PIN DESCRIPTION

Pin	Name	Pin type	Description	Notes
1	GND	Supply	Ground (0 V)	
2	RF I/O	A IN/OUT	Tx: output RF Rx: input RF	Note 3
3	GND	Supply	Ground (0 V)	
5	NU	NC	Not Used Pin – do not connect	
6	NDATA_INDICATE	D OUT	Data Indicate Pin	
7	NWAKE	D IN	Wake-up Pin	
8	NU	NC	Not Used Pin – do not connect	
9	NU	NC	Not Used Pin – do not connect	
10	NU	NC	Not Used Pin – do not connect	
11	UART TX	D OUT	UART TX Pin	
12	UART RX	D IN	UART RX Pin	
13	NU	NC	Not Used Pin – do not connect	
14	NU	NC	Not Used Pin – do not connect	
15	GND	Supply	Ground (0 V)	
16	GND	Supply	Ground (0 V)	
17	Vcc	Supply	Power supply	
18	SWDAT	NC	Reserved for programming – do not connect	
19	SWCLK	NC	Reserved for programming – do not connect	
20	SWV	NC	Reserved for programming – do not connect	
21	NRST	D IN	Reset. Input Pull-Up	
22	NU	NC	Not Used Pin – do not connect	
23	NU	NC	Not Used Pin – do not connect	
24	NU	NC	Not Used Pin – do not connect	
25	NU	NC	Not Used Pin – do not connect	
26	NU	NC	Not Used Pin – do not connect	
27	NU	NC	Not Used Pin – do not connect	
28	NU	NC	Not Used Pin – do not connect	
29	NU	NC	Not Used Pin – do not connect	
30	GND	Supply	Ground (0 V)	

## 4. ELECTRICAL CHARACTERISTICS AT +25°C TEMPERATURE

Parameter	Min.	Typ.	Max.	Unit	Notes
Supply Voltage (Vcc)	2.1	3.3	3.7	V	
Current consumption	Sleep	-	2.3	µA	Note 1
	Tx mode	-	96	mA	
	Rx	-	13	mA	
Operating frequency range	2405	-	2480	MHz	
Tx frequency accuracy	-	±19	-	kHz	
Sensitivity	-	-	-93	dBm	
Output Power (on 50 Ω load)	-	14	-	dBm	Note 2, 3
Modulation	OQPSK				
UART Interface data rate	9600	-	115200	bps	

**Note 1:** Current consumption measured at power supply level of 3.3V.

**Note 2:** All RF parameters measured with Input/output (pin 2) connected to 50-Ω impedance signal source or load.

**Note 3:** *In order to not exceed 10 dBm EIRP to comply the RED 2014/53/EU, use an appropriate antenna or set the output power to an appropriate level.*

**MIPOT S.P.A.**

Via Corona, n. 5  
(Zona Ind.)

34071 Cormons (GO)

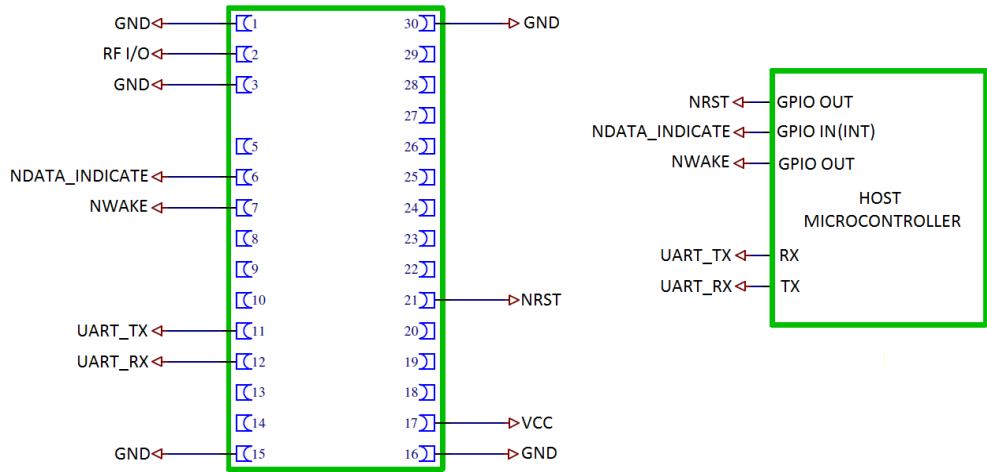
Italy

Tel. +39 0481 630200 ra.

Fax +39 0481 62387

mipot@mipot.com

**5. TYPICAL CONNECTION DIAGRAM**

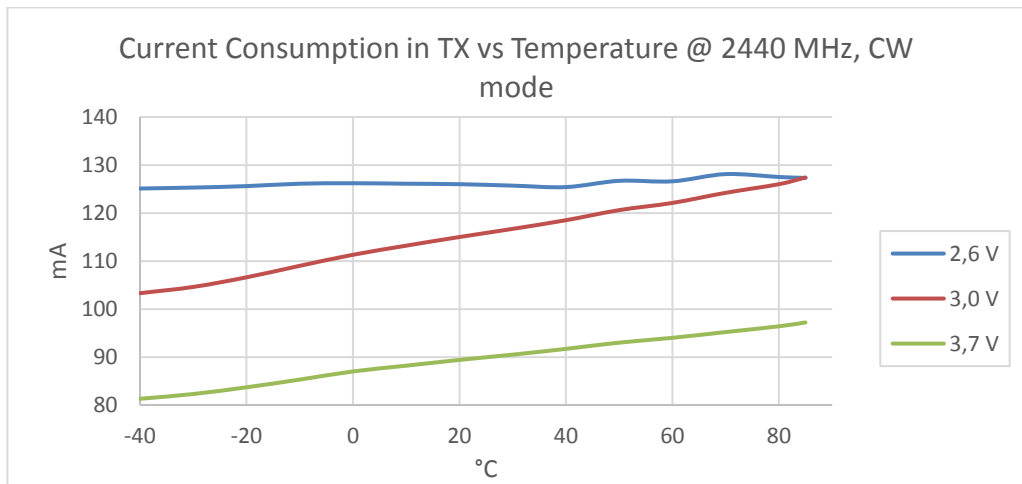
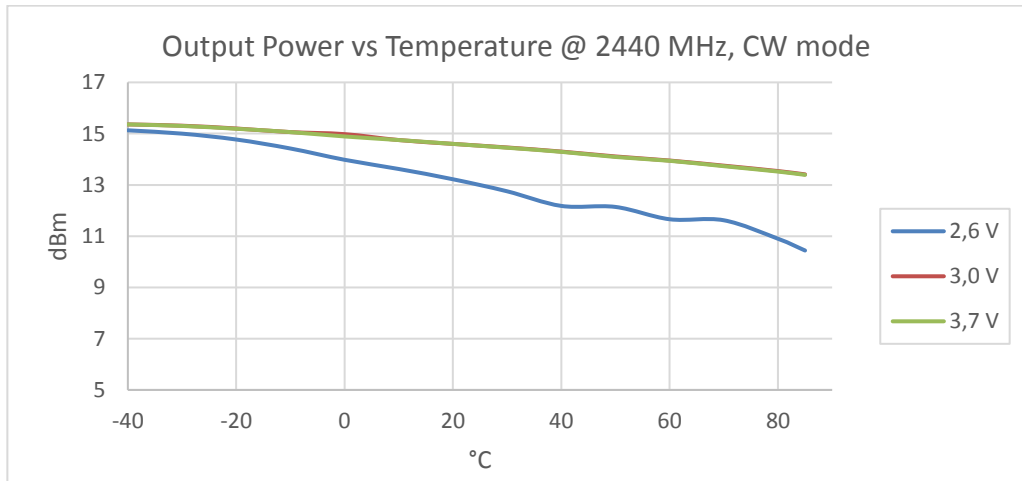


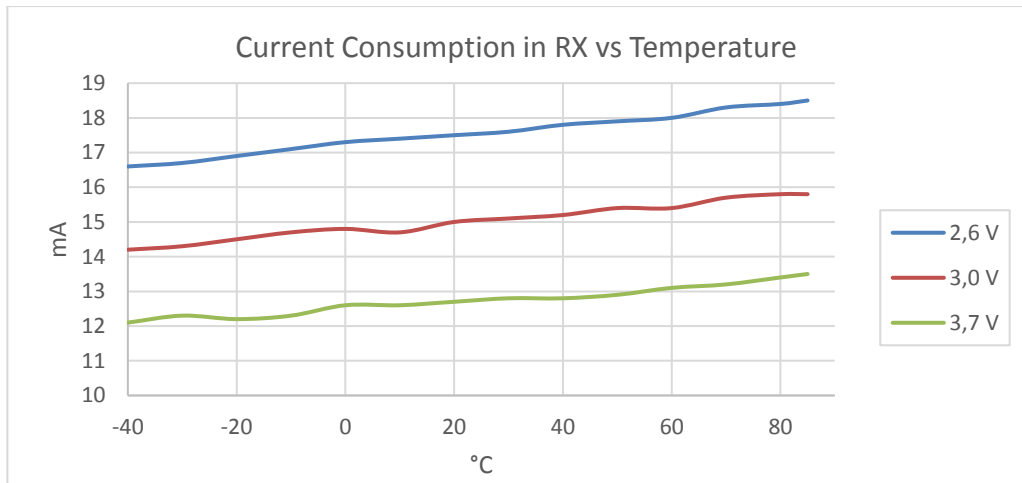
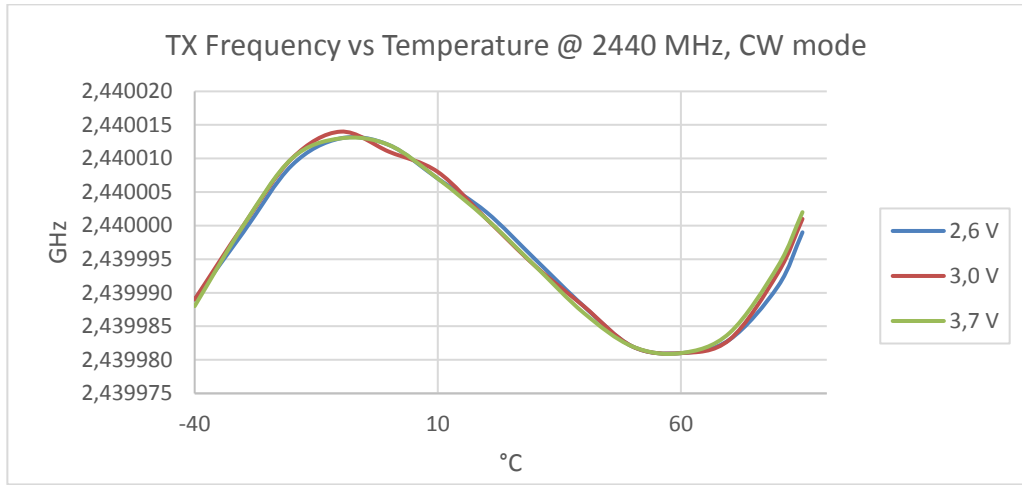
**NOTES:**

NRST pin connection is optional but recommended.

NDATA\_INDICATE pin connection is optional but it is mandatory for low power designs, to wake-up host microcontroller from the sleep state.

**6. TYPICAL CHARACTERISTICS**

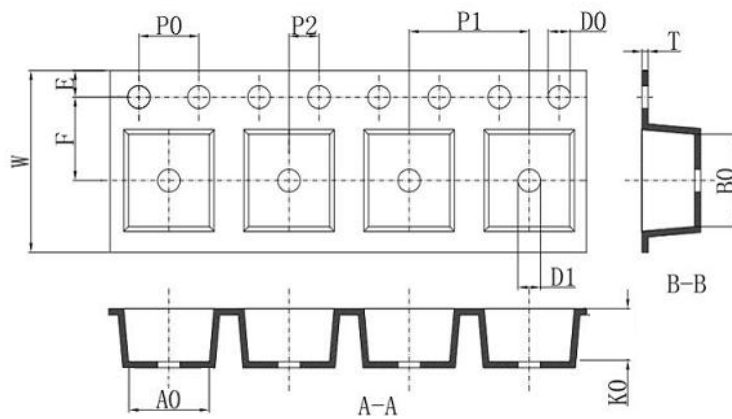




**7. PROCESS INFORMATION**

**7.1. Delivery**

32001445 modules are delivered in tape/reel packaging including 250 units.



- Dimensions:**  
**W = 44 mm**  
**P = 20 mm**  
**T = 0.35 mm**  
**Ao = 16 mm**  
**Bo = 26.5 mm**  
**Ko = 3.6 mm**  
**D0 = 1.5 mm**  
**D1 = 1.5 mm**

## 7.2. STORAGE AND HANDLING

### 7.2.1. Moisture Sensitivity Level (MSL)

The Moisture Sensitivity Level (MSL) relates to the packaging and handling precautions for devices that are sensitive to moisture-induced stress. The MSL standard is IPC/JEDEC J-STD-020 and can be downloaded from [www.jedec.org](http://www.jedec.org).

Following table summarizes the dry pack requirements for different MSL levels in the IPC/JEDEC specification.

Dry Pack Requirement	
MSL LEVEL	Dry Pack Requirement
1	Optional
2	Required
3	Required
4	Required

According to IPC/JEDEC specification J-STD-020, if a device passes MSL level 1, it is classified as not moisture sensitive and does not require dry pack. If a device fails level 1 but passes a higher level, it is classified as moisture sensitive and must be dry packed in accordance with J-STD-033.

The 32001445 is qualified for **MSL level 3**.

### 7.2.2. Dry Bag

Products with an MSL level of 2 or above are shipped dry packed in a Moisture Barrier Bag (MBB). Carrier materials such as trays, tubes, reels, etc., that are placed in the MBB can affect the moisture level within the dry bag. The effect of these materials is compensated by adding additional desiccant in the MBB to ensure the shelf life of the SMT packages.

IPC/JEDEC specifications require that MSD sensitive devices be packaged together with a Humidity Indicator Card (HIC) and desiccant to absorb humidity. If no moisture has been absorbed, the three fields in the HIC indicate blue color.

### 7.2.3. Storage and floor life

The calculated shelf life for dry packed SMT packages is a minimum of 12 months from the bag seal date, when stored in a non-condensing atmospheric environment of <40°C/90% RH.

Following table lists floor life for different MSL levels in the IPC/JEDEC specification.

Floor life	
MSL level	Floor life (out of bag) at factory ambient ≤ 30 °C / 60 % RH or as stated
1	Unlimited at ≤ 30 °C / 85 % RH
2	1 year
2a	4 weeks
3	168 hours
4	72 hours

The parts must be processed and soldered within the time specified for the MSL level. If this time is exceeded, or the humidity indicator card in the sealed package indicates that they have been exposed to moisture, the devices need to be pre-baked before the reflow solder process.

### 7.2.4. Drying

Both encapsulate and substrate materials absorb moisture. IPC/JEDEC specification J-STD-020 must be observed to prevent cracking and delamination associated with the "popcorn" effect during reflow soldering. The popcorn effect can be described as miniature explosions of evaporating moisture. Baking before processing is required in the following cases:

- Humidity indicator card: At least one circular indicator is no longer blue
- Floor life or environmental requirements after opening the seal have been exceeded, e.g. exposure to excessive seasonal humidity.

Refer to Section 4 of IPC/JEDEC J-STD-033 for recommended baking procedures. Table 4-1 of the specification lists the required bake times and conditions for drying.

Following table provides a summary of specified recommendations:

Bake Time							
Package Body	MSL Level	Bake @ 125 °C		Bake @ 90 °C ≤ 5 % RH		Bake @ 40 °C ≤ 5 % RH	
		Exceeding Floor Life by > 72 h	Exceeding Floor Life by ≤ 72 h	Exceeding Floor Life by >72 h	Exceeding Floor Life by ≤ 72 h	Exceeding Floor Life by > 72 h	Exceeding Floor Life by ≤ 72 h
Thickness ≤ 1.4 mm	2	5 hours	3 hours	17 hours	11 hours	8 days	5 days
	2a	7 hours	5 hours	23 hours	13 hours	9 days	7 days
	3	<b>9 hours</b>	<b>7 hours</b>	<b>33 hours</b>	<b>23 hours</b>	<b>13 days</b>	<b>9 days</b>
	4	11 hours	7 hours	37 hours	23 hours	15 days	9 days
	5	12 hours	7 hours	41 hours	24 hours	17 days	10 days
	5a	16 hours	10 hours	54 hours	24 hours	22 days	10 days
Thickness >1.4 mm ≤ 2.0 mm	2	18 hours	15 hours	63 hours	2 days	25 days	20 days
	2a	21 hours	16 hours	3 days	2 days	29 days	22 days
	3	27 hours	17 hours	4 days	2 days	37 days	23 days
	4	34 hours	20 hours	5 days	3 days	47 days	28 days
	5	40 hours	25 hours	6 days	4 days	57 days	35 days
	5a	48 hours	40 hours	8 days	6 days	79 days	56 days
Thickness >2.0 mm ≤ 4.5 mm	2	48 hours	48 hours	10 days	7 days	79 days	67 days
	2a	48 hours	48 hours	10 days	7 days	79 days	67 days
	3	48 hours	48 hours	10 days	8 days	79 days	67 days
	4	48 hours	48 hours	10 days	10 days	79 days	67 days
	5	48 hours	48 hours	10 days	10 days	79 days	67 days
	5a	48 hours	48 hours	10 days	10 days	79 days	67 days

Packages of sensitive components in 32001445 have a thickness ≤1.4 mm.

- **Do not attempt to bake modules at temperatures higher than 60°C while contained in tape and rolled up in reels. If baking at higher temperature is required, remove modules from packaging and place them individually onto oven tray.**

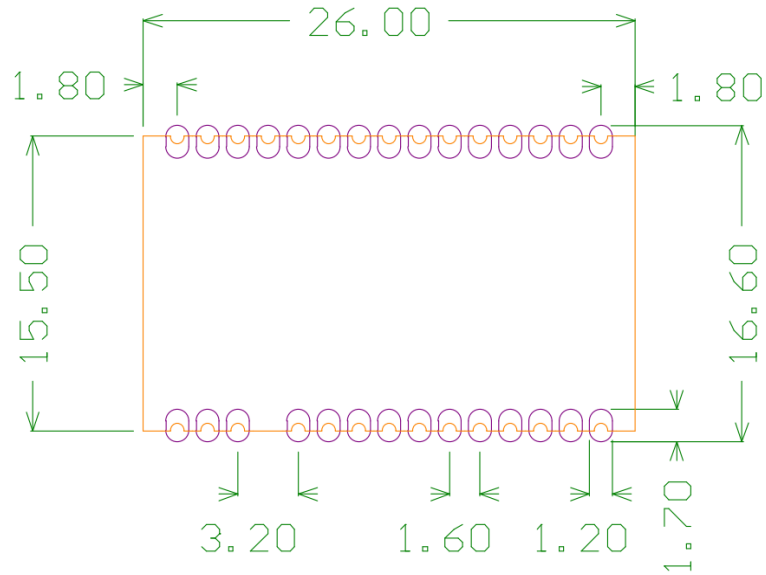
**Oxidation Risk:** Baking SMT packages may cause oxidation and/or intermetallic growth of the terminations, which if excessive can result in solderability problems during board assembly. The temperature and time for baking SMT packages are therefore limited by solderability considerations. The cumulative bake time at a temperature greater than 90 °C and up to 125 °C shall not exceed 96 hours. If the bake temperature is not greater than 90 °C, there is no limit on bake time. Bake temperatures higher than 125 °C are not allowed.

### 7.3. SOLDERING INFORMATION

#### 7.3.1. Soldering pad pattern

The finished surface on the printed circuit board pads should be made of Nickel/Gold.

The recommended soldering pad layout on the host board for the 32001445 is shown in the diagram below (purple lines):



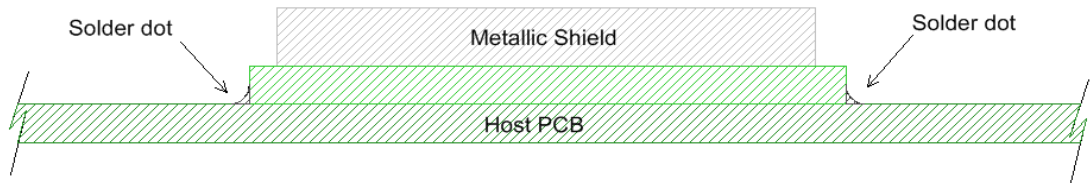
All dimensions in mm

**Neither via-holes nor wires are allowed on the PCB upper layer in area occupied by the module.**

**7.3.2. Solder Paste**

Module 32001445 has designed for surface mounting using half-moon solder joints (see diagram below). For proper module assembly, solder paste must be printed on the target surface of the host board. The suggested solder paste height should be within 150 µm and 180 µm.

The following diagram shows mounting characteristics for Module integration on host PCB:



**7.3.3. Placement**

The 32001445 can be automatically placed on host boards by pick&place machines like any integrated circuit.

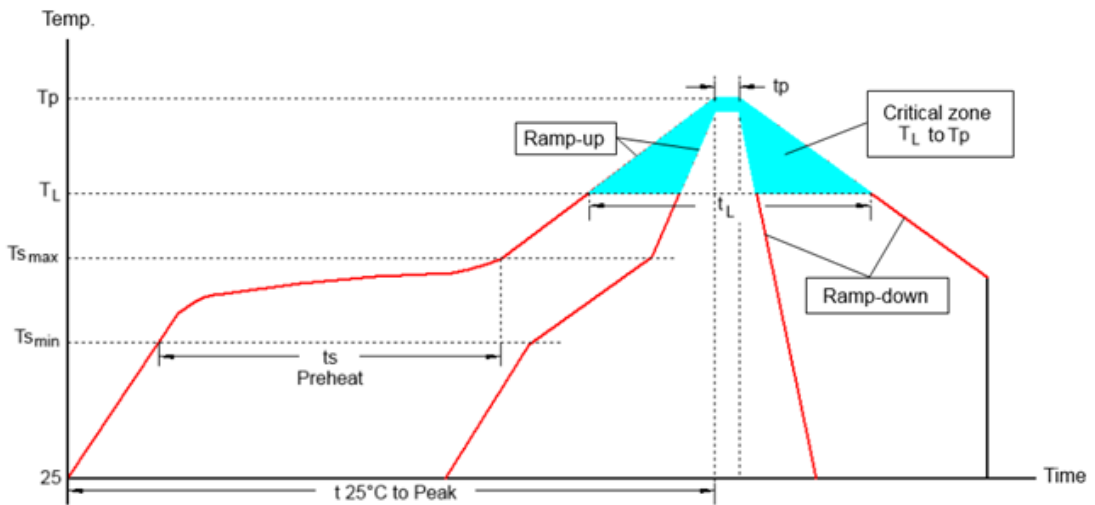
**7.3.4. Soldering Profile (RoHS Process)**

It must be noted that 32001445 module should not be allowed to be hanging upside down during the reflow operation. This means that the module has to be assembled on the side of the printed circuit board that is soldered last.

The recommendation for lead-free solder reflow in IPC/JEDEC J-STD-020D Standard should be followed:

Profile Feature	Sn-Pb Assembly	Pb-Free Assembly
Average Ramp-UP Rate (Ts max to Tp)	3 °C/s max	3 °C/s max
Preheat -Temperature Min (Ts <sub>min</sub> ) -Temperature Max (Ts <sub>max</sub> ) -Time (Ts min to ts max)	100 °C 179 °C 80-135 s	130 °C 217 °C 80-135 s
Time maintained above: -Temperature (T <sub>L</sub> ) -Time (t <sub>i</sub> )	183 °C 30-90 s	220 °C 30-90 s
Max Peak/Classification Temperature (Tp)	220 °C	250 °C
Time within 5 °C of actual Peak Temperature (t <sub>p</sub> )	10-15 s	10-15 s
Ramp-Down Rate	4 °C/s	4 °C/s
Rise Time 25 °C to Peak Temperature	6 min. max	8 min. max

Note: All temperatures refer to topside of the package, measured on the package body surface



**CAUTION – Please note that if the host board has submitted to a wave soldering after the reflow operation, a solder mask must be used in order to protect the 32001445 module’s metal shield from being in contact with the solder wave.**



## 8. REGULATORY APPROVAL

The 32001445 module is a RED Directive assessed radio module manufactured and tested with the intention of be integrated into a final product.

The 32001445 module has been tested to RED 2014/53/EU Essential Requirements for Health and Safety (Article 3.1a), Electromagnetic Compatibility (EMC) (Article 3.1b), and Radio (Article 3.2).

**Restrictions in terms of maximum allowed RF power or duty cycle may apply: it is responsibility of the system integrator to assure conformance of the final application to these requirements.**

**The output power spectral density shall not exceed 10 dBm/MHz, in order to comply with the ETSI 300-328 V2.2.1 part 5.4.3 “Power Spectral Density”, radiated measurement. Keep the max output EIRP < 10 dBm.**



**Note:** To maintain conformance to the testing applied on the 32001445, the module shall be installed in accordance with the installation instructions in this data sheet and shall not be modified.

When integrating a radio module into a completed product the integrator becomes the manufacturer of the final product and is therefore responsible for demonstrating compliance of the final product with the essential requirements of the RED Directive.

## 9. REVISION HISTORY

Revision	Date	Description
0.0	26-06-2019	Preliminary
0.1	11-05-2020	RED 2014/53/EU approvals, limits of EIRP

### MIPOT S.P.A.

Via Corona, n.5  
(Zona Ind.)

34071 Cormons (GO)

Italy

Tel.+39 0481 630200 ra.

Fax +39 0481 62387

mipot@mipot.com