

HOW TO SET UP THE WM-BUS MODULE TO WORK WITH THE DEMO GUI

USER GUIDE



Description

This document will guide you through an example setup of the LoRaMip GUI.

Contents

1. Overview	3
2. Software setup	4
2.1. Starting the GUI	4
2.2. Module factory reset	5
Command example	7
3. Sending and receiving a message	7
4. Revision History	8

1. Overview

The wM-Bus Mipot module will be controlled by a PC software connecting via the serial port. The software LoRaMiP GUI can be downloaded directly from the official Mipot website, link below.

<https://mipot.com/en/>

After logging in, in the documents section of your product, you can find two versions (32 and 64 bit) of the software.

This document is valid for:

- 3200150xAxx
- 32001605BE8SW

As regards the hardware setup of the DevKit, refer to the document AN_HWS001.

For details about the commands, please see the wM-Bus command reference.

2. Software setup

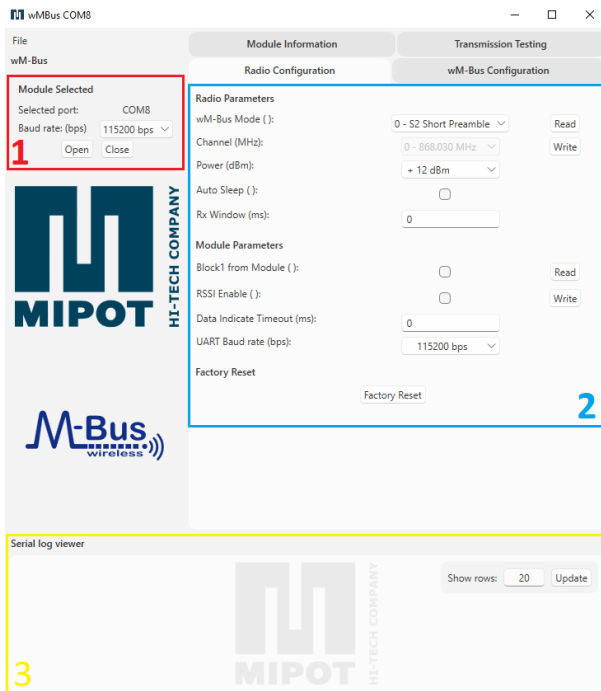
2.1. Starting the GUI

Once all connections are made and the module is powered, start the LoRaMiP GUI. At startup, it will scan available serial ports looking for connected devices. It is possible to connect multiple devices to the same PC.



Once the scan is finished, the serial port with the module connected will be highlighted in green. To use the module, double click on the appropriate COM port.

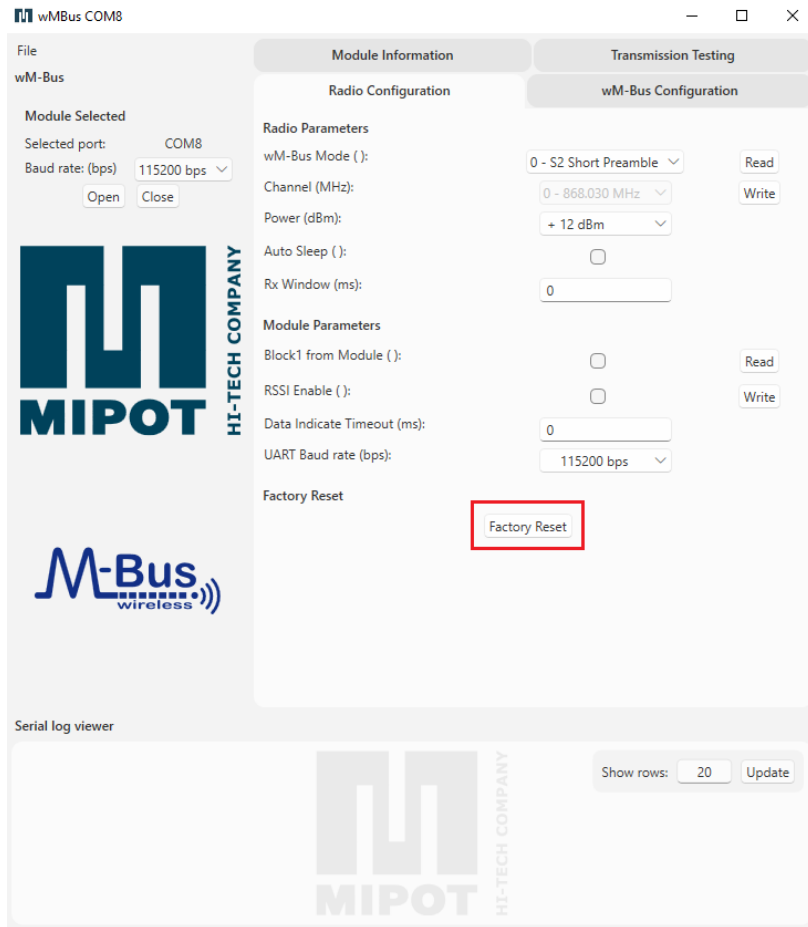
The view that will open is divided in 3 main zones:



1. Serial port control
2. Module control
3. Log of the messages exchanged on the serial port.

2.2. Module factory reset

To start with a known configuration reset the module using the “*Factory Reset*” button.



This will configure the module with the default parameters as shown in the next table.

Radio Parameters	
Parameter	Value
wM-Bus Mode	0 - S2 – Short Preamble
Channel	0 - 868.030 MHz
TX Power	13 dBm
AutoSleep	0 - Disabled
RX Window	0 ms
wM – Bus Parameters	
Parameter	Value
C Field	44
Man ID	0000
Device ID	00000000
Version	00
Device Type	00
Module Parameters	
Parameter	Value
Block1 From Module	0 - Disabled
RSSI Enable	0 - Disabled
Data Indicate Timeout	5 ms

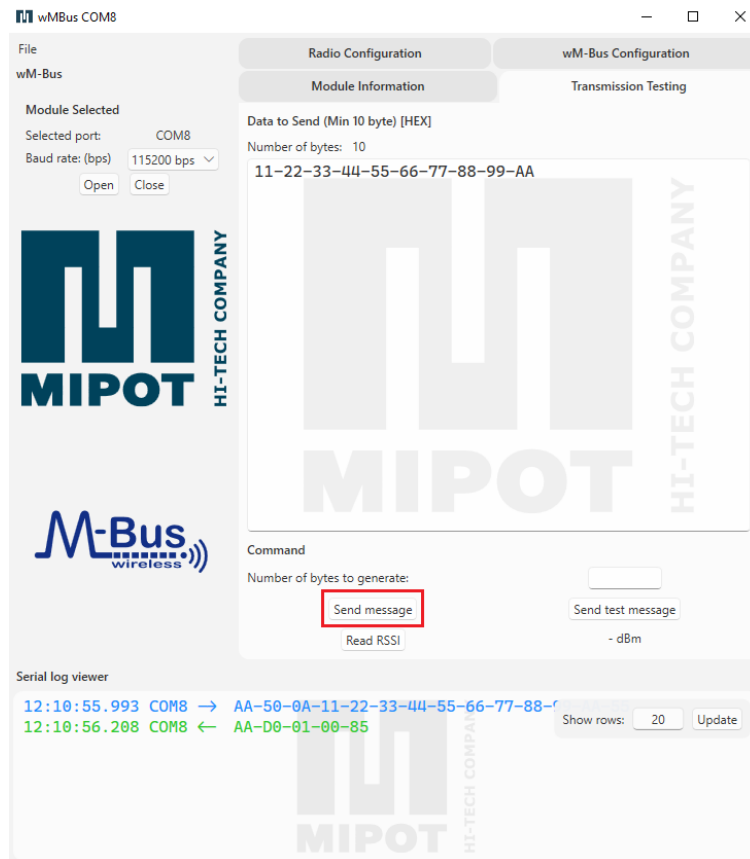
Before writing a parameter, read them with the appropriate button so all the fields are filled with the values configured in the module.

Command example

Reset the module to start with a known configuration of the module with the command `FACTORY_RESET_CMD (0x31)`:

Host: 0xAA, 0x31, 0x00, 0x25
 Device: 0xAA, 0xB1, 0x01, 0x00, 0xA4

3. Sending and receiving a message



Command example

To send a confirmed message use the `TX_MSG_CMD (0x50)`. For example, to send the payload **“0x11, 0x22, 0x33, 0x44, 0x55, 0x66, 0x77, 0x88, 0x99, 0xAA”**:

Host: 0xAA, 0x50, 0x0A, **0x11, 0x22, 0x33, 0x44, 0x55, 0x66, 0x77, 0x88, 0x99, 0xAA**, 0x55
 Device: 0xAA, 0xD0, 0x01, 0x00, 0x85

On the receiver side, the `RX_MSG_IND (0x53)` will indicate the reception of a radio message:

Host: 0xAA, 0x53, 0x0A, **0x11, 0x22, 0x33, 0x44, 0x55, 0x66, 0x77, 0x88, 0x99, 0xAA**, 0x52

4. Revision History

Revision	Date	Description
0.1	19.03.2025	First version
0.2	08.01.2026	Document title changed Added 32001605BE8SW Document images updated